



Culinary Heat Lamps



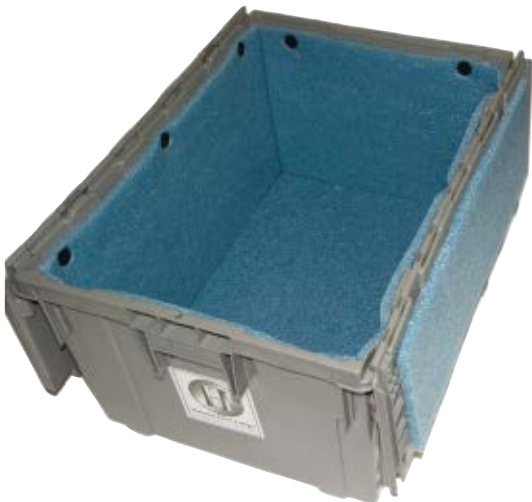
- Portable Free Standing Heat Lamps
- Hanging Heat Lamps
- Carving Stations
- Sneeze Guards

Transportation & Storage Containers

We offer two convenient sizes to accommodate EVERY Hanson Freestanding Culinary Heat Lamp.

Mounted Plug Outlet *for* Free Standing Heat Lamps

"Our latest feature the Mounted Plug Outlet is available on ALL of our freestanding heat lamps. In this configuration the lamp has both a cord and a plug which allows one lamp to be the power source for another. In this way you can connect multiple lamps together allowing for a more flexible layout and presentation!"



CS20 Container
L 20.75" x W 28" x D 14.75"

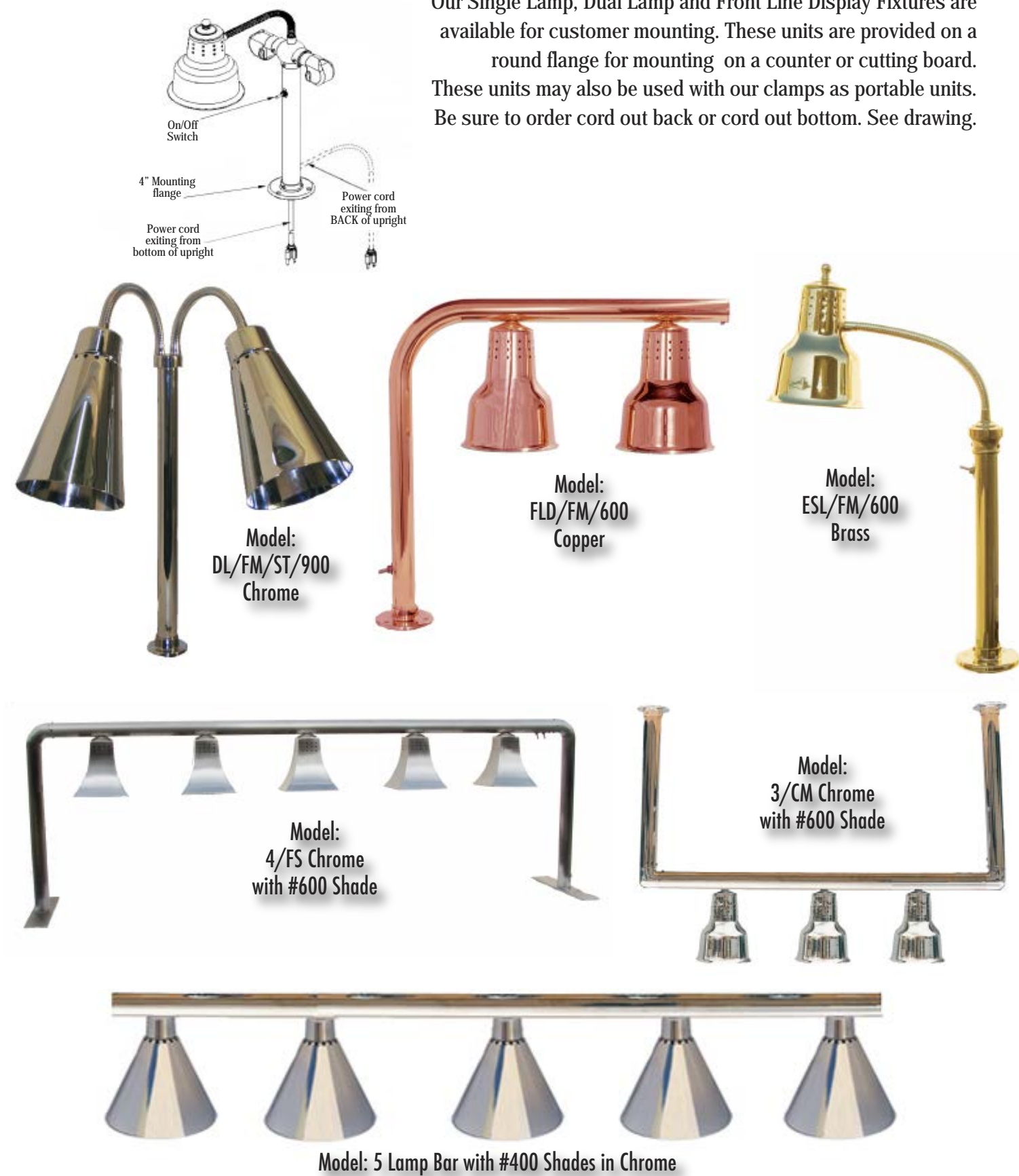
CS24 Container
L 24" x W 34" x D 19"



CS20 and CS24 are stackable and foam lined.

Mounted Heat Lamps & Heat Bars

Our Single Lamp, Dual Lamp and Front Line Display Fixtures are available for customer mounting. These units are provided on a round flange for mounting on a counter or cutting board. These units may also be used with our clamps as portable units. Be sure to order cord out back or cord out bottom. See drawing.



Catalog Index:

Portable Free Standing Heat Lamps

Single Lamp Units **2**

Dual Lamp Units **4**

Retractable Hanging Heat Lamps **6-7**

Carving Stations **8**

Carving Displays **8**

Quad Lamp Carving Displays **8**

Original Chef's Carvers **8**

Heated Base Carving Stations **9**

Cut-Away Carving Board Units **10**

Stainless Steel Frame Carving Stations **10**

Portable & Mounted Sneeze Guards **11**

Portable Sneeze Guard w/ Heat Lamps **11**

Mounted Heat Lamps **12**

Mounted Heat Lamp Bars **12**

Free Stander Storage Cases **13**



Free Standing Culinary Heat Lamps

The Free Standing are constructed with the finest materials and made in the USA. Its single heatlamp is designed to maintain food temperatures while enhancing the presentation of any dish. The unit is available in seven different shade designs.

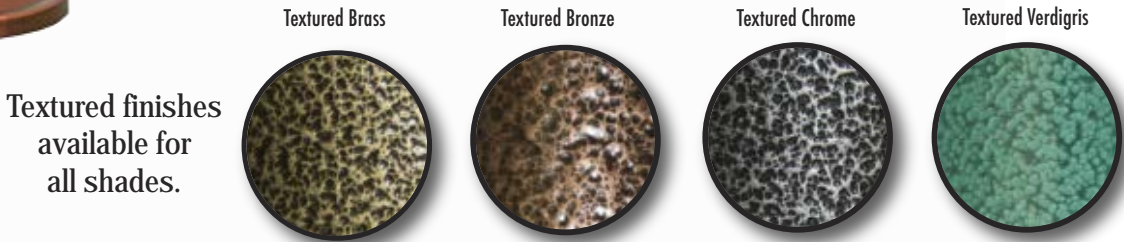


Model:
SLM/100/ST
Stainless Steel

Model:
SLM/200/ST/BK
Black

Model:
SLM/300/ST/SC
Smoked Copper

Standard Colors: Stainless Steel
Smoked Copper, Chrome and Black.
Custom color chart available on request.



Portable Sneeze Guards

with & without Hanson Heat Lamps



Sneeze Guards available with feet for portable use, or with flanges for Customer mounting. Custom finishes & custom glass etching always available.

Custom sizes are available



Stainless Steel Frame Units

with Hanson's Drip Pan System



Model:
DLM/BB/300BK/ST/DS



Model:
EDL/BB/600/SS/DS

Cut-Away Boards

with Culinary Heat Lamps



Model:
DLM/600/CA
Dual #600 Lamps in
Copper on a Vertical Base



Model:
SLM/500/CA
Single #500 Lamp in
Chrome on a Horizontal Base

We offer synthetic granite bases that match our removable and interchangeable carving boards.
Quickly turning a freestanding lamp into a complete carving station!
Lamps available in a variety of styles & colors. Modular bases come in black or white.

Single Lamp Units



Model:
SLM/900/ST
Stainless
Steel



Model:
SLM/500/RB9/SOL/CH
Chrome



Model:
SLM/700/ST
Brass



Model:
SLM/RB7/SOL
Chrome



Model:
DLM/900/ST/TT



Custom
two toned configuration
available in any combination.



We offer a conveniently sized case, ideal for transportation and storage of the Free Standers. See page 13 for full information.

Free Standing Culinary Heat Lamps

Dual Free Standing Culinary Heat Lamps. The consistent and flameless heat is engineered to maintain food temperatures and designed to improve presentation. The unit is available in seven different shade designs.



HANSON



Model: DLM/100/ST/BK



Model: DLM/200/ST/SC



Model: DLM/300/ST/BK

Heated Base Carving Stations



Model:
DLM/HB/2024



Model:
DLM/HB/2036/BK

Bases come in two sizes 20" x 24" or 20" x 36" • Available in 120 or 220 volts

Carving Station with Sneeze Guards



Model:
DLM/900/HB/2024



Model:
CD/HB/LUX/2036

Culinary Carving Stations



Model:
SLM/BB/100/ST
Chrome



Model:
DLM/WB/200/ST
Stainless Steel



Model:
DLM/BB/600
Brass



Model: DLM/RB9/SOL



Model: DLM/500/RB12/BC



Model: DLM/900/ST/SC



Model:
DLM/700/CC/ST
Stainless Steel



Model:
DLM/BB/300/ST
Chrome



Model: DLM/RB9/ANT/BR



Model:
CD/BB/LUX/BB

Carving Display is provided
with two single lamp
fixtures on 20" x 36" base.
Lux model includes two
dual lamp fixtures.

Custom Glass
Etching Available



Model:
CD/BB/CH
Brass



Antique Base Available.



We offer a conveniently sized case,
ideal for transportation and storage
of the Free Standers. See page 13
for full information.

TYPE - RET
Retractable
cord,
ceiling
mount.



Shade #600
Color: Copper
with TK50
Track Mount
Model: TK50/600



Shade #100
Color: Chrome
Model: 100/C/CH

TYPE - C1
Switch
Used on
#100 Shade
Only



Shade #900
Color: Smoked Copper
Model: 900/RET/SC

TYPE - C2
Switch
Used on
Shades
#200, #300
& #500

TYPE - RET
Retractable
cord,
ceiling
mount.



Shade #200
Color: Black
Model: 200/C/BK



Shade #700
Color: Chrome
Model: 700/LGT/CH



Every Hanson
hanging light and
retractable lamp
is available with
a track light
adapter or
ceiling box.



Shade #500
Color: Textured Bronze
Model: 500/SMT/TBZ

TYPE - LGT
or **SGT**
Rigid ceiling
mount. 3/8"
or 1 1/2"
diameter
down tube.



Shade #300
Color: Stainless Steel
Model: 300/C/SS



TYPE - C3
Switch
Used on
Shades #400,
#600, #700,
#800 & #900



Shade #400 - Color: Red
Model: 400/C/RD



HANSON

Ceiling Mounted Retractable Heat Lamps

